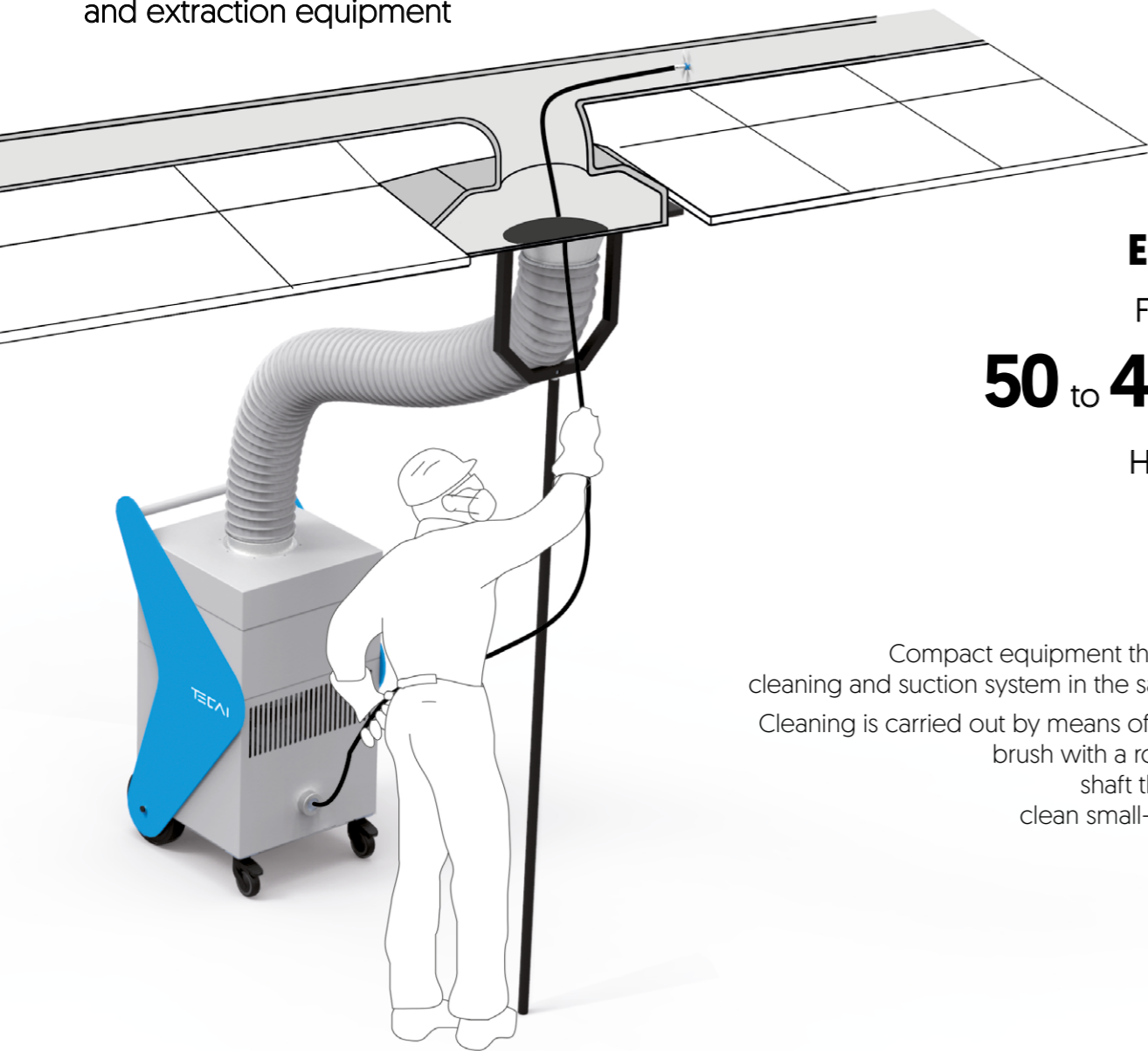


venet

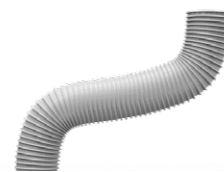
Ventilation and air-conditioning duct cleaning and extraction equipment



ELECTRIC
For ducts of
50 to 400 mm
Hose length
10 m

Compact equipment that integrates a cleaning and suction system in the same machine. Cleaning is carried out by means of a mechanical brush with a rotating flexible shaft that allows it to clean small-section ducts.

INCLUDED ACCESSORIES ▼



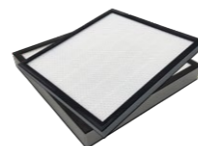
VACUUM HOSE.
Ø160 mm, 3,33 m of length
AC3101319



ADAPTER HOSE DUCT. Ø160 mm
AC3101404



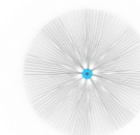
FLEXIBLE SHAFT WITH BAG.
10 m. Ø50-250 mm
AC3303614



F7 AND H13 FILTERS.
400 X 400 X 21. 1 unit.
400 X 400 X 46. 1 unit.

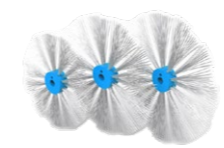


REMOTE CONTROL.
AC3303605

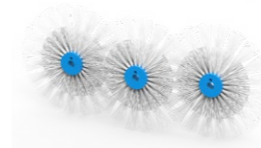


NYLON BRUSH.
Ø250 mm,
CP4000250

OPTIONAL ACCESSORIES ▼



PACK FINE NYLON BRUSHES.
Ø300 | 350 | 400 mm
CP2103040

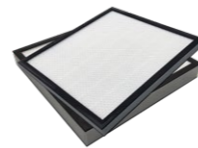


PACK NYLON SQUARE DUCT BRUSHES.
Ø300 | 350 | 400 mm
CP2104055

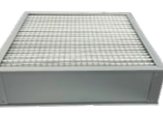


FLEXIBLE SHAFT.
15 m.
Ø300-400 mm
AC3303615

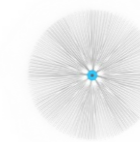
CONSUMABLES ▼



F7 AND H13 FILTERS.
400 X 400 X 21. 1 unit.
AC1300007
400 X 400 X 46. 1 unit.
AC1300013



G4 PREFILTER.
380 x 380 x 96. 1 unit
AC1300004



NYLON BRUSH.
Ø250 mm,
CP4000250

TECHNICAL FEATURES

venet

| | |
|----------------------------|--|
| Maximum power equipment: | 230V-110V / 50 - 60Hz 0,7 kW // 0,94 HP |
| Maximum power consumption: | 3 A |
| Suction power: | 0,27 kW |
| Maximum suction flow rate: | 1600 m ³ /h |
| Maximum depression: | 600 Pa |
| Operating point: | 1000m ³ /h a 450 Pa |
| Filtration level 1: | F7 |
| Filtration level 2: | H13 |
| Degree of separation: | >99 % |
| Aspiration hose: | Ø160 mm // 3 m / 9,84 ft |
| Brushing power | 0,25kW |
| Brushing speed: | Adjustable 0 - 1000 rpm |
| Direction of rotation: | Right / Left |
| Control system: | Electric |
| Control panel: | Membrane keyboard |
| Brushing shaft: | Ø10 mm // 10 m / 32,8 ft |
| Noise level: | 72 dB |
| Main materials: | Painted steel and HDPE |
| Dimensions: [L x W x H] | 530 x 481 x 926 mm 20,87 x 18,94 x 36,46 inches |
| Weight: | 50 kg // 110,2 lb |